



Little Pickles

PRE-SCHOOL



Address: Branston Church of England Infant Academy

Beech Road

Branston

LN4 1TJ

Phone: 01522 793112

E mail: info@little-pickles.com

Website: www.little-pickles.com

A message from the Chair of Trustees

Branston Little Pickles Pre-school is a small community pre-school and a registered charity (1176959). We are run by a small, elected committee (Trustees) of mainly parents, past and present, without which our pre-school could not operate. The committee, who are all volunteers, are responsible for the overall management and smooth running of the setting.

Little Pickles pre-school has been providing early years care in our village for over 50 years and we feel that we are a vital part of our community. (Since 2016 we have also been providing a before and after school service for children from Branston Infant and Junior schools; we call this 'Big Pickles'). The Little Pickles staff team work closely with the committee to ensure we provide a high-quality service for our families. We are all involved in discussing and updating our Business Improvement Plan which looks at evaluating the service that we provide the community and ways in which we can further improve our setting.

As the new Chair of this dedicated group of staff and trustees, I have been so impressed and proud of the hard work that each team member brings to the setting. Without doubt, it is the dedication and passion shown that ensures that this charity is successful in meeting its aims in providing a high-quality provision. The staff build positive relationships with families; this is reciprocated by our parents who are pro-active in helping with, or organising, fundraising events to raise extra money for the pre-school. (As a charity, we rely on fees and fundraising to operate so if you have any ideas on fundraising events, have skills that can support us or/and are interested in joining the committee please contact the pre-school manager).

We are very proud of our setting and welcome visits by parents/carers. If you would like to arrange a visit, please contact the pre-school manager.

Holly Murphy
Chair of Trustees
Branston Little Pickles Pre School

MEET OUR COMMITTEE



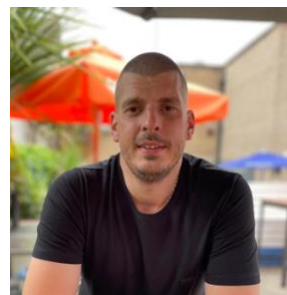
Holly Murphy
Chair of trustees



John Stacey
Deputy chair of trustees



Debra Negus
Trustee



Dan Skuse
Trustee



Zoe Dean
Trustee



Alison Parsons
Secretary

MEET OUR STAFF TEAM



Jodie Cook
Pre-School Manager



Hayley Northing
Senco



Elizabeth Ziller
Deputy Manager



Yvette Gladding
Little Pickles Assistant



Cheryl Cottard
Pre-School Assistant



Carly Wilson
Pre-School Assistant



Louise Exton-
Brown
Deputy Manager



Alison Brightey
Pre-School Assistant



Natasha Skuse
Pre-school Assistant

Our Mission and Purpose:

To provide a safe and creative setting for children to explore, learn and develop in their early years in order to maximize their development and growth opportunities supporting their best start in life.

Our Team

Our qualified staff attend regular training for continuous development of our Pre-School.

We work together closely together to support each other in providing a safe and exciting learning environment for our children.

We have lots of strengths which we make full use of for the benefit of the setting.

We provide excellent care to the children and strive to make it feel like a home from home.

The staff work very hard to ensure the children's development needs are identified and catered for.

Staff are involved in making decisions for the pre-school and contribute to improvement planning.

We have regular team meetings to share ideas and play.

We have team building events to maintain good working relationships.

We love to play an active role in children's development to encourage, engage and inspire them with learning.



Our Children take the lead

...on their Learning and Development

We strive to create an engaging, inviting environments for all our children.

The children are listened to and are all at the centre of everything we do.

We strive to actively promote 'awe and wonder' throughout our curriculum for all our children. We believe that curiosity creates something to be explored and celebrated at every opportunity.

We endeavour to create a home from home environment for our children.

Our staff know our children well and provide for their needs to help them to become confident learners.

We follow the curriculum guidance as set out in the Early Years Foundation Stage document.



Ofsted 2021 "Staff have high expectations of the children".

Our Learning Environment

Children are allowed space to play and extend ideas. Children's play is uninterrupted as much as possible.

Team members will support play as and when required by children.

'Loose parts play' is used to enable children to use open-ended resources.

Team members support children's learning by getting them to think critically.

Natural resources are used throughout our setting to encourage active learning and of the environment.

Outside play is encouraged throughout all seasons.

Children are encouraged to share their interests which feed into the activities and themes that are planned.

Ofsted 2021 "There is a strong emphasis placed on developing children's imagination."



Parents as Partners

We encourage our parents to be involved.

All children are offered a home visit or pre-visits upon starting with us to help settle them in and for us to build relationships with parents.

Parent's evenings are held twice a year to share their children's development.

'Stay and plays' are held regularly to offer opportunities for parents to spend time within the setting.

Newsletters are sent out monthly to keep parents/carers up to date.

We use Tapestry to communicate with parents about what children have been doing and to update on their progress and learning.

Appointments with key support networks are offered to parents upon request.

Questionnaires are given to parents; the information gained is evaluated, shared and acted upon to ensure continuous improvement.

Ofsted 2021 Parents are highly complementary about the staff. Comments include, 'the staff are wonderful, so supportive', and 'without them I would be lost'."



Starting Pre-School

Prior to starting Little Pickles Pre-school, we will arrange an appropriate time to visit you and your child at home. This introduces a familiar face for your child and gives children and parents the opportunity to get to know a little bit about Pickles. We love getting to know our new Little Pickles and meeting them in their home environment is a great start to gather information about their personalities and interests.

It is important that you and your child feel happy and secure at all times. To help your child settle here at Little Pickles we offer settling in sessions and opportunities to discuss your child's individual needs. Your child's key person will regularly liaise with you regarding your child's achievements and experiences.

Daily Routine

The pre-school opens at **9:00 am** for the morning session and **12:00 pm** for the afternoon session. On entering the pre-school, children are asked to select their pebble and post it in the basket. This helps them to begin name recognition. The pre-school staff are happy to discuss anything regarding your child and their needs; drop off and pick up times can be busy so if you wish to discuss anything in depth, or privately, feel free to make an appointment by emailing info@little-pickles.com.

Children are able to play straight away inside, and outside, once the gate has been locked. Free flow play will be encouraged until 9:45 when they welcome each other at greeting time.

Activities are designed to develop children in all areas of the Early Years Foundation Stage curriculum, for example: investigation, personal and social development and physical development. The children have opportunities for mark making, maths and language development throughout the activities.

From 10:00 to 10:45, and 2:00 to 2:30 the 'Little Pickles Snack Bar' is open. The children independently wash their hands and serve themselves with the fresh fruit and vegetables available. Milk, water and the occasional treat of crumpets or tea cakes are also available. This is all under the supervision of a staff member. We aim to create a relaxed snack period for our children where they can freely come to access the healthy food available.

At around 11:30 and 2:30 we have 'tidy up time' where all of the children are encouraged to help put away all the toys in the correct places. As the session draws to an end, they have story time.

At 12:00 and 3:00 parents and carers collect their children. Children are encouraged to empty their trays and gather all their personal belongings. For the end of day collection, parents can collect at 3:00. The end of the day may give opportunity for a brief update on the children's day. Please book an appointment if you would like an in-depth discussion with your child's key worker by emailing info@little-pickles.com.

Lunch Time

For those children staying for a full day session, lunch time is between 12:00 till 1:00. Your child will need to bring a healthy packed lunch with them. This will be eaten alongside a staff member and is a great opportunity for social interaction and learning about a healthy lifestyle. We ask that you

include an ice pack in the lunchbox to keep the contents fresh and that the lunch does not include any sweets or fizzy drinks.

Key Worker

All children are assigned to a key worker as they start with us. They play an important part in helping children to settle, liaise with families, plan and track children's development and provide support to children and families.

Tapestry is an online learning journal which is used to: share information about your child's day, track their progress, share observations, share and celebrate achievements. Your child's key worker, and sometimes other staff, will post tapestry updates throughout the term. We love it when parents post their observations and home activities too!

Ofsted 2021 "Children have superb relationships with staff."

Additional needs

Our professional staff, and our key worker system, allow us to provide children with the attention they require to develop at an individual pace to reach their full potential. We are experienced in working in close liaison with other professionals specialising in the care and education of young children. If you would like to discuss your own child's additional needs, please arrange an appointment with our SENCO.

Early Years Foundation Stage Curriculum

We follow the curriculum guidance as set out in the Early Years Foundation Stage document. This comprises of seven areas of learning broken down into two categories:

The Prime areas

- Personal, Social and Emotional Development
- Communication and Language
- Physical Development

The Specific areas

- Literacy
- Maths
- Understanding the World

- Expressive Arts and Design.

The Early Years Foundation Stage curriculum is designed to:

- Develop lively, enquiring minds.
- Develop the ability to communicate in verbal and non-verbal ways, clearly and confidently with peers and adults.
- Engage in cooperative play.
- Engage in both child and adult-led activities.
- Apply knowledge, skills attitudes and practical abilities that will become a firm foundation for future learning and a resource from which further development will draw meaning.
- Move towards acquiring a reasoned set of attitudes, behaviours and values, including a respect for other children's race and culture.
- Develop a good self-image, self-motivation and independence.
- Look outside themselves, to begin to appreciate other points of view and to represent objects and situations in their play.
- Appreciate creative thought and action through art, music, drama and dance and to experience some personal achievement in these activities.
- Develop personal agility, physical co-ordination and confidence in movement.
- Develop an enjoyment and appreciation of the literature, language and music of other cultures as well as their own.
- Develop an awareness of the total environment of the school and its community and encourage the development of investigation, observation and some awareness of cause and effect.
- Develop skills and learning characteristics to be 'ready for school'.

More information on the delivery of the EYFS (Early Years Foundation Stage) can be found on the Department for Education website.

A key part of the Early Years Foundation Stage is the preparation of children for school and supporting them to grow in independence. We work closely with local schools to support children's transition to school and to prepare children by developing skills in tasks that will be expected in their reception year.



Fees and sessions

We provide morning, afternoon or full day sessions Monday to Friday term time only. The morning session is 9:00 – 12:00 and afternoon session 12:00 – 3:00

All children are eligible for Early Years Entitlement for 38 weeks per year from the term after they turn 3 years old. This funding means that your child is entitled to 15 hours early years education funded by the local authority or, if eligible, the extended 30 hours funding. This can be split between settings if required. We also accept children entitled to 15 hours of funding for 2 year- olds, if eligible. Children can access this the term after they turn two.

Any sessions not covered by the Early Years Entitlement are charged at £18.00 per session for children from 2 -4 years of age.

[Note: fees are correct at time of printing but are subject to change]

Fees continue to be payable if a child is absent, whether it is for a holiday or illness. If the attendance of any child lapses for more than 3 weeks, the child may lose their place to accommodate another child on the waiting list.

Visits

We welcome you to come and have a look around our setting. Or, for any more information, please call Jodie, the Pre-School Manager, on 01522 793112 or email us at info@little-pickles.com



Uniforms

Uniforms are not compulsory at Little Pickles however we do sell uniforms if you would like to purchase them. We sell embroidered T-shirts, polo shirts and sweatshirts. If you would like an order form, please speak to a staff member.

Policies and Procedures

All our policies are available on our website at www.little-pickles.com.

Things to remember

- Slippers are encouraged for children to wear indoors to provide comfort and helping us to keep the floors clean.
- Each child has their own tray for pictures, slippers, letters etc.
- Children need to bring with them a named bag with spare clothes; we are always getting messy!
- Children need to bring a water bottle with their name on.
- Children should bring a healthy lunch box with an ice pack if staying for lunch.
- Please provide your child with wellington boots, coats, gloves, winter hats, sun hats and sun cream (depending on the weather). We enjoy spending time outside in all weathers!

Please contact us to arrange a visit to the pre-school, we would love to show you around our setting.